

A PARADIM SHIFT IN POULTRY PRODUCTION



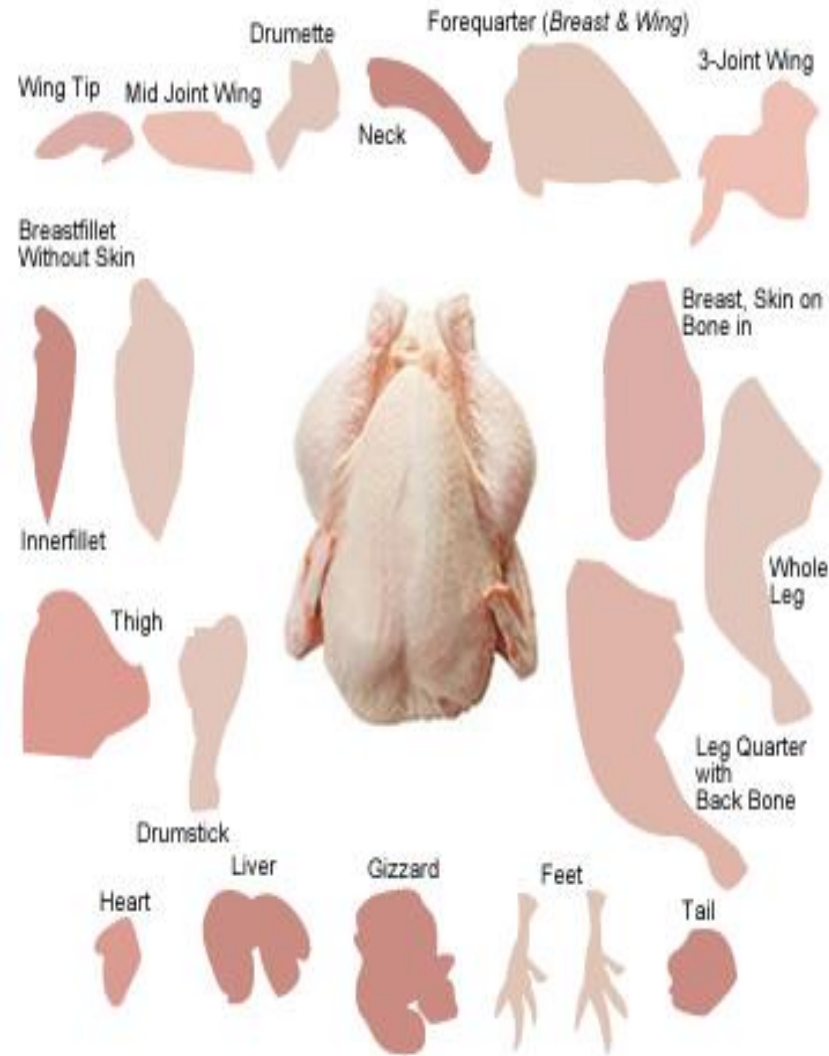
Let Nature Repairs Nature

www.kikotechnology.org

POULTRY PRODUCTION

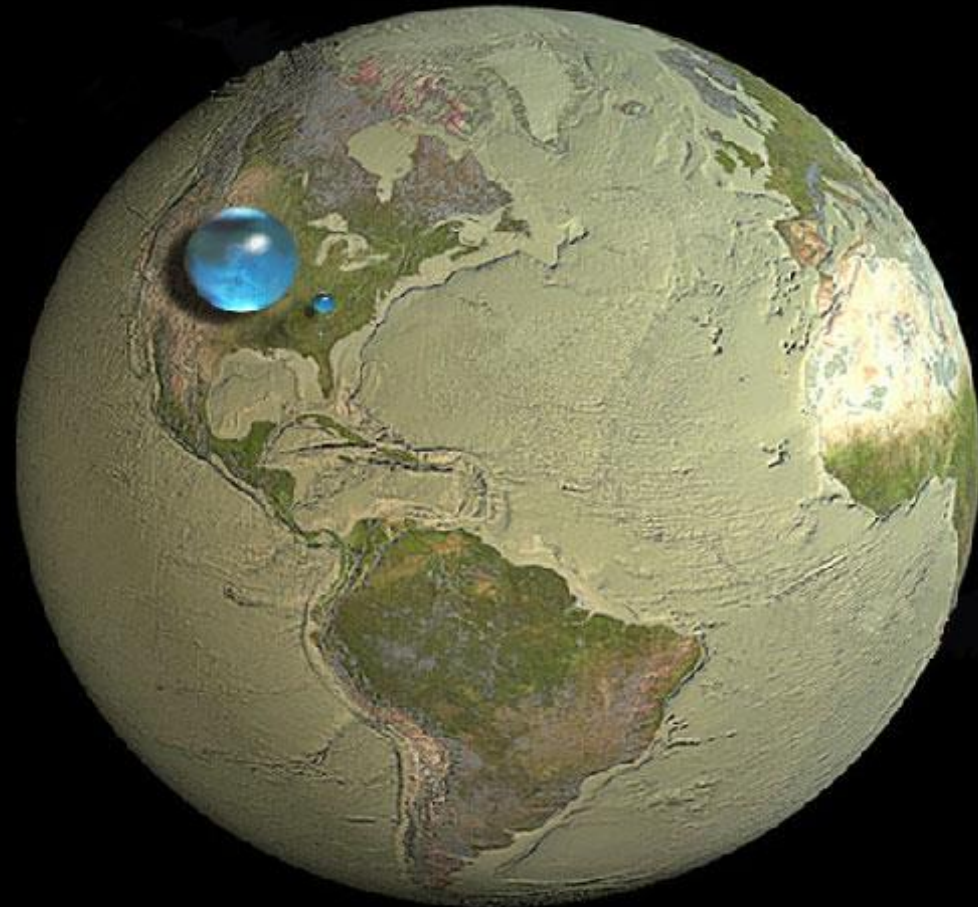
“Poultry is the second most widely eaten meat in the world, accounting for about 30% of meat production worldwide, after pork at 38%”

-- Wikipedia



WHAT IS HAPPENING TO WATER?

- Today's water is overstressed – only 0.3% of Earth's water (e.g. of 330 million cubic miles) is available for drinking or irrigation since time memorial
- The cause? Increased population and heavy industrial atmospheric pollutants
- The net result? Our everyday water vibrates slower than 70 years ago causing less crop yields, soil eco-imbalances, higher input costs, decreased health



Water in, on, and above the Earth

- **Liquid fresh water**
- **Freshwater lakes and rivers**

Howard Perlman, USGS
Jack Cook, Adam Nieman
Data: Igor Shiklomanov, 1993

WHAT IS KIKO TECHNOLOGY

- A Revolutionary “GAME CHANGER”
- A “Paradigm Shift” Green Technology
- Improves the physics of water without chemicals or enzymes
- Patent pending for all living organisms e.g. Includes tissue cells



WHAT IS KIKO TECHNOLOGY



A proven and patent-filed GREEN Technology that improves the kinetic energy at WATER's molecular level.

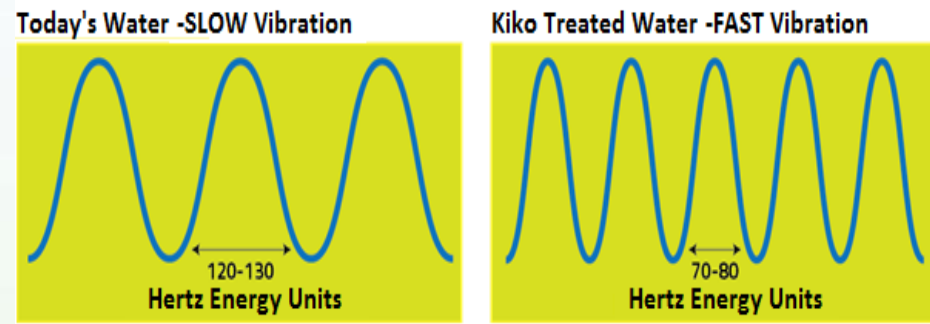
- The results are stunning, virtually mind-boggling.
- Re-thinks traditional industry practices to improve productivity - livelihoods & health – food security – food yields - cost of operations – water utilization – pathogen damage – energy reduction - safe and friendly to the environment.
- A universal application for agriculture, aquaculture, poultry production, animal husbandry, industrial, medical and soil enhancement.
- The delivery is simple yet clever – using the laws of harmonics and an understanding of molecular cellular energy (Phonon molecular energy) - to unlock the many mysterious ways of the water we have long taken for granted.

WHAT INSPIRED THE KIKO TECHNOLOGY INVENTION ?

Research conducted by Dr. Albert Einstein, Sir William Herschel and practice of ancient arts of Acupuncture and Qigong.

All living organisms are influenced by the Earth's natural electromagnetic shield – and when surface water's slow-moving harmonics is accelerated akin to energized water found deep in the Earth's core, what effect would it have on our health, plant yields and animal husbandry? – the answer is found in the 300+ field studies over 7 years of applied science.

Phonon molecular energy is mathematical and measureable (NASA techniques).



KIKO Technology is based on influencing the vibration or harmonics of water (e.g. frequency) and its kinetic energy (Phonon molecular energy).



HOW DOES KIKO TECHNOLOGY WORK ?

Reduces the Surface Tension of water (SEPARATION)

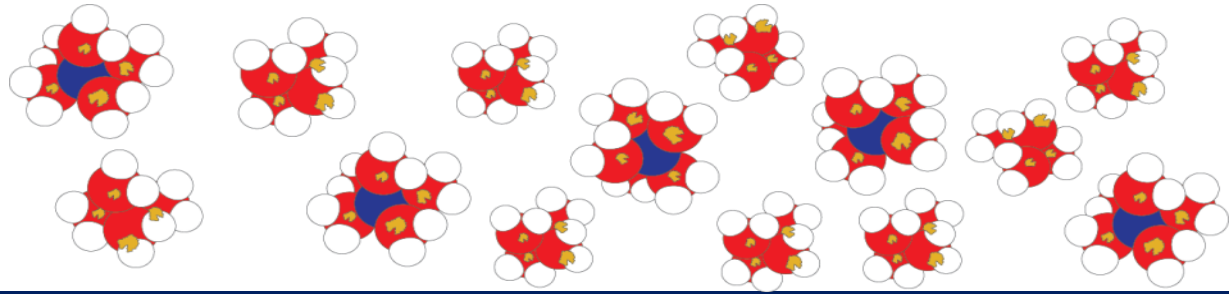
KIKO breaks down the surface tension holding H-O-H molecules and bonded substances such as silica, chlorine, bacteria, calcium carbonate-phosphate-sulfate & other minerals. This action at the molecular state allows hard water to actually ‘feel soft’ – effects are measureable.

“Soft water” increases living cells absorption rates and faster uptake of nutrients so vital for living cells growth and health.

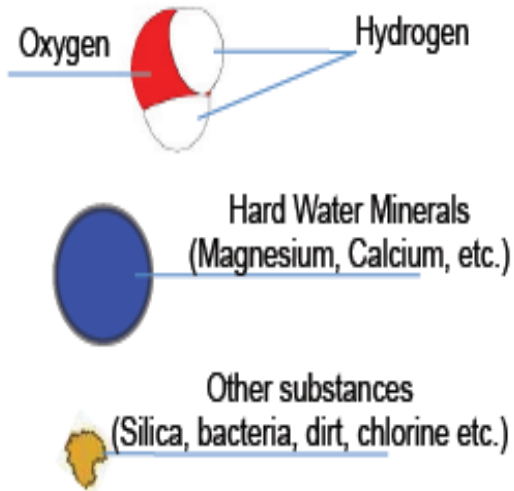
This separation effect also applies for de-scaling & rust removal from tank or equipment surface. The overall effect is energy savings besides clean surfaces and efficient operations.



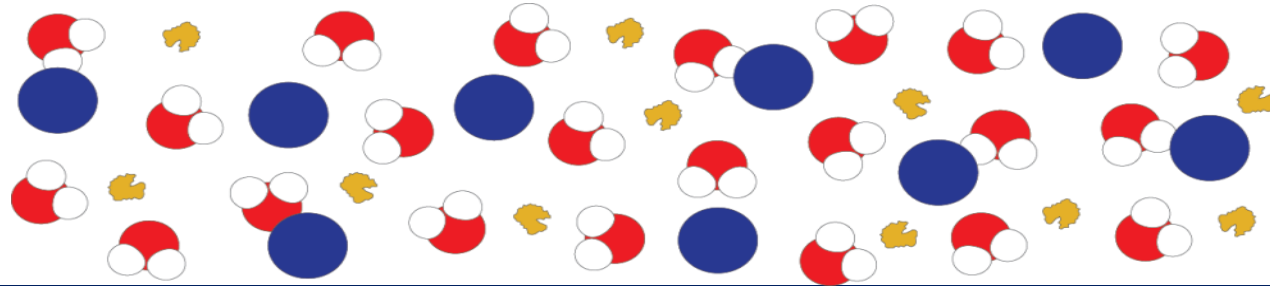
WATER IS NOT PURE H₂O – SURPRISED ?



DIFFERENT MOLECULES IN WATER



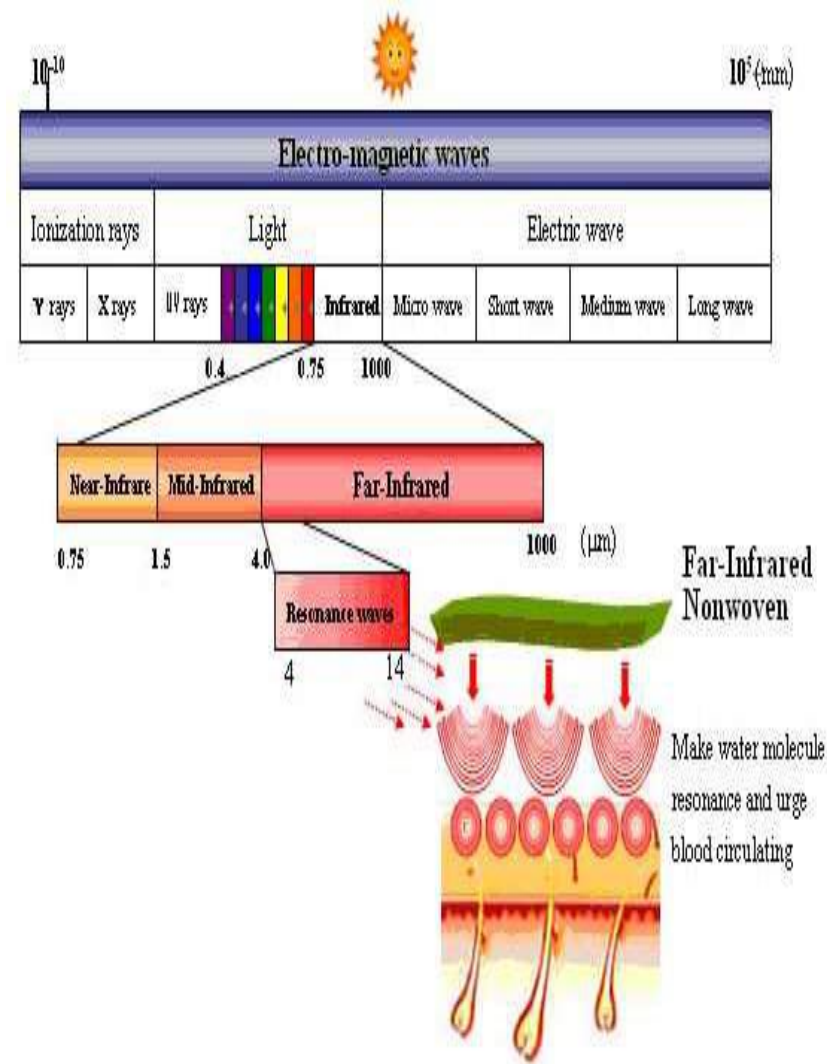
Water is not just pure H-O-H but a complex bond of H₂O minerals such as dirt, bacteria, toxins chemicals – today water as we know it **VIBRATES SLOWLY**



Kiko Technology separates minerals salts and toxins from the water molecules letting the water to “feels soft” - in science term this action is called molecular separation.

KIKO TECHNOLOGY EFFECTS ON FAR INFRARED ENERGY – ENHANCE CELL GROWTH

- FIR is responsible for growth, healing and regeneration in ANY living organisms.
- All FIR energy are emitted by the Sun – a wave length just like Gamma rays, X rays, UV, Microwaves Infrared and Radio frequency – only light rays are visible to humans.
- Today’s slow-vibrating water absorbs only 4 - 10% of the available FIR – insufficient.
- KIKO allows ANY water to absorb 70% to 90% More FIR energy – due to phonon harmonic motion at the molecular level of Hydrogen and Oxygen.
- For humans & live stocks, FIR influences the molecular cellular energy, assisting the immune defense system and blood and bodily water circulation.



BENEFITS OF KIKO TECHNOLOGY IN POULTRY PRODUCTION

BROILER CHICKEN



- GROW FASTER to reach market size of 2.1 kg
- SAVING 3% to as high as 12% feed cost
- BETTER MEAL QUALITY – LARGER legs & thighs
- NO SCALE forms in all water feed tanks & piping thence provides healthier drinking water

LAYER EGGS



- 5 to 6 % MORE eggs laid
- 3 to 5 % LARGER eggs
- 3 % HEAVIER bird weight
- 50 % LOWER mortality
- NO SCALE forms in all water feed tanks & piping thence provides healthier drinking water

BROILER CASE STUDY # 1 – GORGIA, UNITED STATES 2011

Species : Cobb Vantress one day old Broiler Chick

Conducted By : Greg F. Mathis, Ph.D., SOUTHERN POULTRY RESHEACH INC., GORGIA.

Objectives: To determine if kiko Stones improves performance of commercially produced broiler chickens.

Procedures: Two replication pen each with 50 male chicks both obtained from Cobb-Vantress hatchery, Cleveland, GA. One of the pen was fed with KIKO energized water by immersing 1 Tritan in the watering pen.

Results:	Day 42	50 Control Birds	50 KIKO Birds	Improvement
	Feed Consumption	123.83	121.93	1.9 PPT
	Feed Conversion Ratio	1.807	1.734	0.073 PPT (FC Factor)
	Weight Gain	2.040	2.061	0.021 PPT

BROILER CASE STUDY # 2 – INDIA, 2011

Location: A commercial poultry meat production farm in India, is US FDA approved, MRSH (UK) audited and EU approved for sales to buyers such as KFC and McDonalds.

Species : Cornish crosses broiler chicks starting at one day old.

Objective: Growth to 2.1 kg (the desired market weight), measured in days, between a control and a test population fed on KIKO Water.

Procedures : The trial was conducted on 200 chickens with 52-day growth cycles. 100 of which drank normal tap water (the Control) while the other half drank tap water containing one (1) KIKO Tritan cartridge.

Results: The KIKO birds grew to 2.1 kg in 44 days whereas the control took 52 days, as normal.

Bird Quality: Legs and thighs of the KIKO birds were visibly larger than the control.

Cost Savings: The 7-day faster growth saved the farm 12.5% in feed costs (or: 700g per bird).

For a farm of this size raising 1 million birds each time, its savings in feed can easily in the range of USD \$180–230,000 each year.

BROILER CASE STUDY # 3 – IRELAND, 2011

- Species:** Cornish crosses broiler chicks starting at one day old.
- Objectives :** To observe KIKO effects on broiler chickens' growth rate & saving in feed.
- Procedures:** The trial was conducted on 200 one day old chicks with 52-day growth cycles. 100 of which drank normal tap water (the Control) while the other half drank KIKO energized water with separate water line linked to water tank containing one (1) KIKO Tritan cartridge.
- Results :** KIKO birds weight gain started to accelerate between day 15 to 28 & achieved targeted weight of 2.1 Kg at day 44 i.e. 8 days earlier thence saving more feed.
All watering pipes were cleaned from scale.
- Meat Quality:** KIKO birds tasted better.

LAYER EGGS CASE STUDY # 4 – KANSATO, ZAMBIA, AFRICA 2012

Species : Pullet egg laying hens.

Objectives: Preference in drinking water and effect on Improvement of EGG Laying Percentage.

Procedures: Two (2) hen houses, housing 199 and 196 pullets each, were treated identically in terms of lighting, type of feed, number of feed bins, number of water troughs (3 in each house), number of laying nests, time of egg collection.....etc.

In the KIKO hen house, 2 of the 3 water containers contained normal spring water while 1 container contained KIKO treated water (inserted with one KIKO cartridge).

On a weekly basis, the 3 water containers in the KIKO house were swapped and moved, thus preventing the KIKO treated water container from enjoying a preferential location in the house.

Results obtained from 6 months observation:

- Egg laid percentage: KIKO treated hens had 2.3% more eggs laid per hen (total eggs/total hen days) over the Control.
- Conversion: KIKO treated hens laid 0.12 more eggs / kg of feed (total eggs/total feed) over the Control.
- Water preference: KIKO water was preferred by hens over normal spring water.
- Average hen weight (KG): KIKO =1.94 kg vs. Control=1.88 kg. (KIKO hens weighed 3.2% more than control)
- Hen mortality - Over the 6 months test period (4 April 2011 to 8 Oct 2011), KIKO hens had a lower mortality rate of 2.0% (2.55% KIKO vs. 4.52% Control).

LAYER EGGS CASE STUDY # 5 – LONGBELT, RUFFORD, UNITED KINGDOM 2012-2013

Species: Layer hens and egg production at Long-belt colony site, one of UK NOBLE egg producing farms.

Objectives:

- Reduction on the number of cracked or imperfect eggs ('seconds') beyond the thresholds from 16th to 72th weeks.
- Improved water clarity and scale removed in water feed tanks and pipes and drip nozzles.

Procedures: This was a straight KIKO trial with no parallel control trial since Long-belt has significant bench mark records over the years. Eight (8) Tritans was deployed in four (4) 25-tonne water tanks.

No. of birds placed: The colony site contains circa 1 million 'caged' 16 weeks old hens which produces some 800,000 eggs per day, 5.6 million eggs per week, and 292 million p.a. from six houses each containing from 153,000–177,000 chickens.

Results: After KIKO, the "second" eggs' percentage was recorded at 5%, an improvement of 3 percentage points against average bench mark. Just 1% improvement on "second eggs" translates to £2,000 savings per week, or £156,000 p.a. Total 3% improvement can achieve saving of £ 468,000 p.a.

KIKO egg's shells were stronger, more appealing & uniform color that yields greater market value.

No scale was formed in all water feed tanks and piping. No cleaning chemical was needed that in turn helps to improve egg laying hens health as well as eggs quality.

SAFETY TESTS – COMPLIANCES WITH FDA CLEAN WATER ACT OF 1975

Test for Human Consumption

July 2010

TUV Laboratory Singapore

The above results show that the sample complies with the requirements of SS 375 : Part 3 : 2001 'High Temperature Tests' and is deemed suitable for use in contact with hot water (85oC) intended for human consumption.



PSB Singapore

Test for Chemicals released

Feb 2010

Mechem Consultancy PTE, Singapore

Test results were obtained by comparing same amount of tap water before applying Kiko stone and after applying Kiko stone. Findings: No chemicals was released from the Kiko stone.



Test for Leachable Lead & Cadmium

May 2008

Intertek Testing Services, Taiwan

Tested for FDA compliance guideline on leachable lead and cadmium content for ceramic ware (Kiko stone). Findings: Comply with FDA guideline



Test for CFU of aerobic bacteria

Feb 2012

South East Water Scientific Service, United Kingdom

Zero CFU detected and treated water property does not exceeds the maximum PCV as defined in the UK's Water Supply (Water Quality) Regulations 2000



Test for Hunan Consumption

Aug 2012

Shenzhen Academy of Metrology & Quality Institute

The test results show KIKO improves normal tap water softness, does not contain any harmful chemicals, safe for human consumption and conforms to PRC Health Standards



KIKO TECHNOLOGY – 300 STUDIES IN 23 COUNTRIES – PROVEN CONCEPT

AGRICULTURE

Productivity & Yields
Sweetness & Taste
Fertilizer & Ag chemicals
Organic & Hydroponics
Shelf life

UNIQUE SELLING POINTS

Profit gains are mind boggling & cost of inputs lowered
Bring food quality back to what it once was
Soil enhanced decreasing insect damage and chemical run-off
Reduces plant nutrient feeds / balanced pH & electrical conductivity
Changes transport time of food and just in time delivery

FISHERIES POULTRY ANIMALS

Tilapia/Catfish/Grouper/Trout /Shrimp
Animal husbandry
Poultry Broilers & Layer eggs

Healthier species– less mortality - less ammonia damage
Profits & feed conversion – no scale in feed water tanks / nozzles
Feed Conversion rates and less egg breakage

KIKO BUSINESS MODEL

Distribution under License rights
Rental Fee for KIKO cartridges
Installation of KIKO products
Safety & Laboratory tests

A simple yet clever distribution partnership
Annualized rolling agreements - warranty in place
No messy installation – recoverable - no after sales service
Compliance to USA FDA Clean Water Act of 1975

CONTACT US

Contact us

info@kikotechnology.org

Founder / Inventor

Mr. James T. Osugi james.osugi@kikotechnology.org

Global Regions:

America's Corporate

Miss Nari Osugi / Director of Marketing, Kiko Technology Limited
nari.osugi@kikotechnology.org / +1- 415 613 5950

Asia Pacific Corporate

Mr. Steven See / Director of Production, Kiko Technology Limited
steven.see@kikotechnology.org / +853- 6273 3293